

## ELECTRIC VEHICLE RACEWAY

### ABOUT

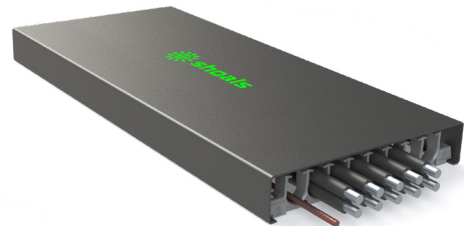
Shoals introduces the Electric Vehicle Raceway for EV BLA (Big Lead Assembly) to simplify the deployment of EV charging infrastructure. The EV Raceway is an above ground cable management and protection system that eliminates the need for trenching and speeds deployment.

### FEATURES

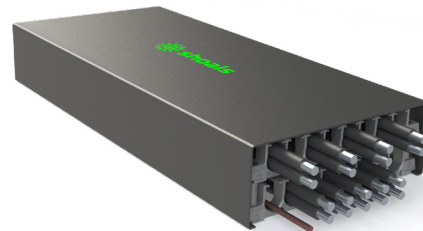
- Designed for above ground installation
- Two-piece design for cable routing and cable protection
- Used between Shoals Quick Connect Bases or along cable route
- Sized and rated for multiple Shoals EV BLA cables
- Thermally and Electrically tested for BLA cables
- Standard 5-year warranty on all models
- ETL Listed to UL5 - Surface Metal Raceways and Fittings
- ETL Listed to CSA C22.2 #62 Surface Raceway Systems
- ETL Listed to CSA C22.2 #126 Metal Cable Tray Systems

### OPTIONS

- Walk Over Raceway can be stacked two-high to increase cable capacity
- Available in multiple lengths
- Clip plate for mounting along asphalt
- 30° bends for turns and routing around obstacles on site



Walk Over Raceway



Walk Over Raceway - Stacked

TECHNICAL SPECS	Single High Raceway	Double High Raceway
Max Cable Size	500 MCM / 240 mm <sup>2</sup>	500 MCM / 240 mm <sup>2</sup>
Max Number of Cables	10 (500 MCM / 240 mm <sup>2</sup> )	18 (500 MCM / 240 mm <sup>2</sup> )
Max Current	200A per 500 MCM / 240 mm <sup>2</sup> cable	200A per 500 MCM / 240 mm <sup>2</sup> cable
Ambient Temp Range	-25°C to 50°C	-25°C to 50°C
Height	3 in / 77 mm	5.625 in / 143 mm
Width	16.25 in / 413 mm	16.25 in / 413 mm
Length*	57 in / 1448 mm, 70 in / 1778 mm, 84 in / 2134 mm	57 in / 1448 mm, 70 in / 1778 mm, 84 in / 2134 mm

\*Raceway can be field cut to shorter lengths to accommodate project dimensions. Product design and specification subject to change or modification without notice.

