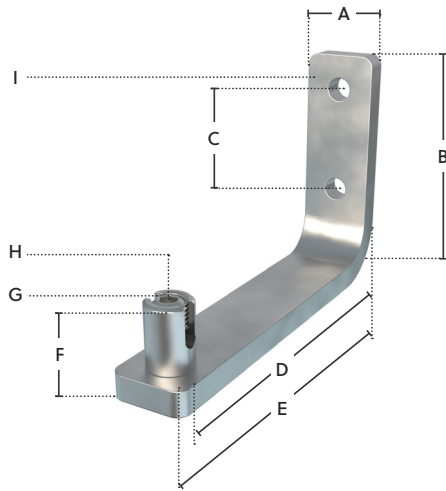


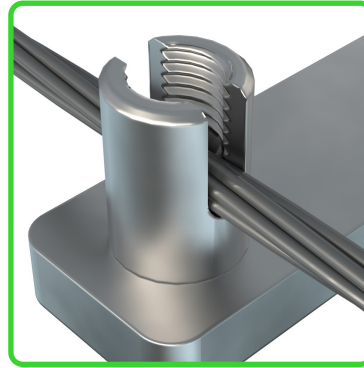
WIRE MANAGEMENT SYSTEM BLA+ MESSENGER BRACKET

ABOUT

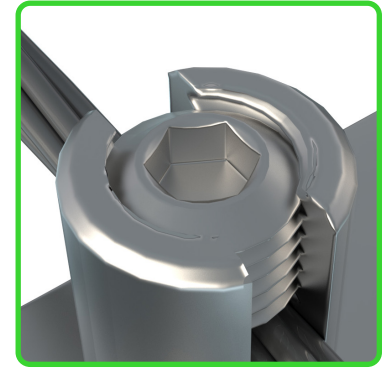
As part of the wire management system, the BLA+ Messenger Bracket holds the tension at an interval allowing for much longer spans. A quick drop in feature allows for fast installation while the barrel clamp stops any lateral movement of the messenger wire, keeping a safe and consistently tensioned messenger wire.



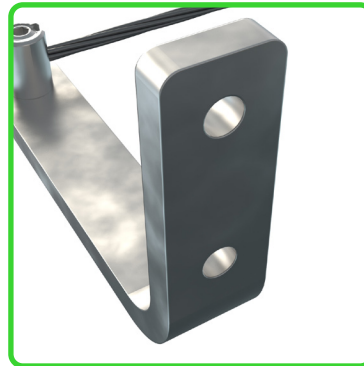
- A 30 mm / 1.2 in
- B 100 mm / 4.0 in
- C M10 50 mm / 2.0 in
- D 142 mm / 5.6 in
- E 163 mm / 6.4 in
- F 35 mm / 1.4 in
- G Aluminium 6062
- H 6 mm / 0.2 in Hex
- I EN1A Steel with G90 Galvanisation



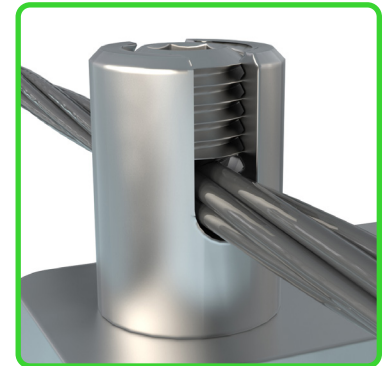
Fast
'Drop-in' installation



One Tool
Standard hex drill bit



M10 Fixing Holes
Standard bolts required



Secure Fixing
No sharp edges

PERFORMANCE

Design Life: +30 years
Working Temp: -40°C - +90°C (-40°F - 194°F)
Max. Load Rating: 200 kg / 440 lbs*

* For deflection data or additional load information contact Technical Services.

SUPPLY

Part Number: WMS00004
Unit Weight: 0.58 kg / 1.3 lbs
Box Quantity: 20
Pallet Quantity: 1,120
Pallet Weight: 695 kg / 1532 lbs

PROPERTIES

Material Thickness: 10 mm / 0.4 in
Material Finish: G90
Insert Width: 18 mm / 0.7 in
Insert Fixing Screw: 6 mm / 0.2 in Hex